

Addendum #1

ADDENDUM #1
March 05, 2019

For
Jordan School District
West Jordan High School
Counseling Center / Day Care Remodel
8136 South 2700 West
South Jordan, Utah 84088

THE ITEMS LISTED IN THIS **ADDENDUM #1** WILL BECOME PART OF THE GENERAL CONTRACT AND WILL BE INCLUDED IN THE APPROPRIATE DRAWING OR SECTION AS NOTED UNDER EACH OF THE FOLLOWING ITEMS.

ARCHITECTURAL

DRAWINGS

Drawing A4.1 Frame Elevations

1.01 Frame Elevation-3/A4.1: Change the glazing type to **Type-1**, tempered glass.

Drawing A7.1 Partial Roof Plan

1.01 Refer to the attached add drawing for clarification of the new duct work installation.

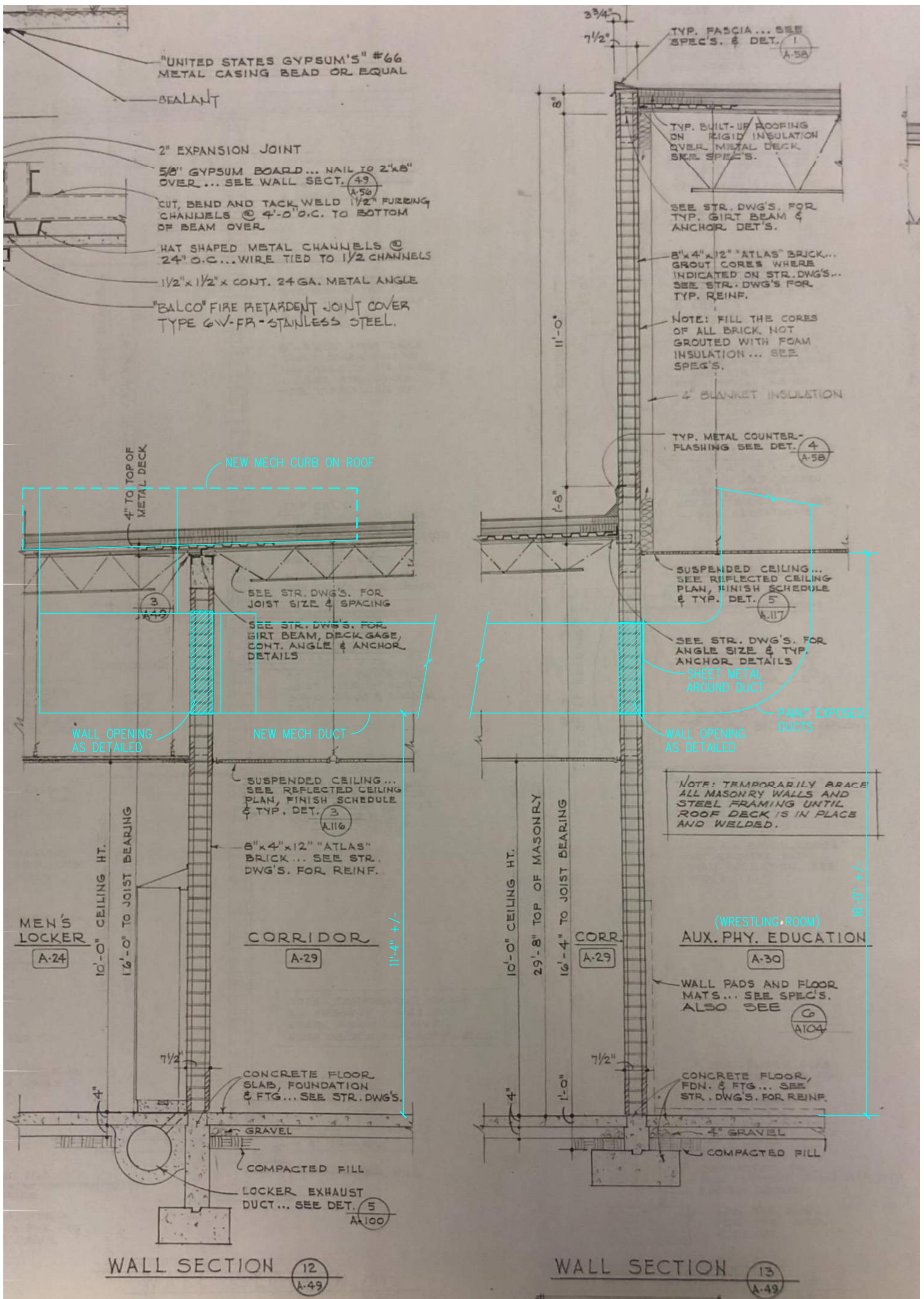
MECHANICAL/ PLUMBING

Refer to attached 3-page Addendum #1 from Olsen & Peterson Engineers.

ELECTRICAL

Refer to attached 1-page Addendum #1 from BNA Consulting Engineers.

END OF ADDENDUM #1



West Jordan High School Counseling Center / Day Care Remodel
 Sheet A7.1, Added Corridor Section Drawing
 Architectural Addendum #1
 5 March 2019

Not To Scale



14 East 2700 South
Salt Lake City, Utah 84115

Phone: (801) 486-4646
Fax: (801) 467-2531

Addendum 1

To: Richard Judkins
Company: NWL
From: John Eagan
Date: March 5, 2019

Project: West Jordan Counseling &
Daycare upgrade
Addendum No: 1
Pages: 3

The following additions, modifications, deletions, and revisions to the Drawings and/or Specifications shall be considered part of the Contract Documents. Acknowledge receipt of this addendum on the Bid Form. Failure to acknowledge addenda in the space provided on the Bid Form may subject the Bidder to disqualification.

Specifications

Section 23 0800 – 1 – 1.1

- F. The installing contractor shall act as liaison between commissioning contractors and periodically inspect the installation of mechanical piping systems, sheet metal work, temperature controls and other component parts of the heating, air conditioning and ventilating systems as the installation progresses.

Section 23 0000 – 1 - 1.3

Remove

1.3 Jordan School District Pre-Approved contractors

- A. Mechanical Contractors:
1. A&B Mechanical Contractors, Inc.
 2. Halverson Mechanical
 3. KK Mechanical
 4. KOH Mechanical
 5. UMC Inc.
 6. US Mechanical, LLC
 7. Western States Mechanical
- B. Sheet Metal Contractors:
1. A&T Sheet Metal
 2. A-J Sheet Metal
 3. Atlas Sheet Metal
 4. Central Utah Sheet Metal
 5. Schoppe Co. Inc.
 6. Sheet Metal Works

DRAWINGS

See Attached drawing M103.

PRIOR APPROVALS:

The following manufacturers, trade names and products are allowed to bid on a name brand only basis with the provision that they completely satisfy all and every requirement of the drawings, specifications, and all addenda shall conform to the design, quality and standards specified, established and required for the complete and satisfactory installation and performance of the building and all its respective parts.

Product

Ceiling exhaust fan
Penthouse
Vav Box
Dual Duct boxes
Fire Dampers

Manufacture

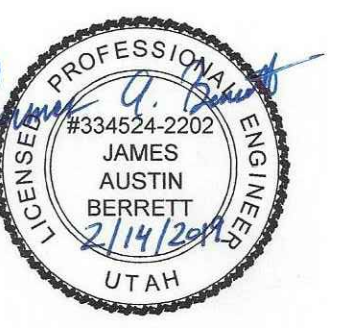
Broan commercial
Carnes
Carnes
Carnes
Cesco

The Project Team Leader has reviewed this document and found it in compliance with internal standards.

A handwritten signature in black ink, appearing to be 'J. E. ...', is written over the signature line.

3-5-2019

END OF ADDENDUM NO. 1



MECHANICAL
ELECTRICAL
PLUMBING



336 South 400 West
Salt Lake City, Utah
84101
Tel: 801.355.5959

OLSEN & PETERSON
A Division of
14 E. 2700 S. 5th Lane, Suite 100, UT, 84115
PH: 801.456.4640 FAX: 801.467.2531

Jordan School District
7905 South Redwood Road
West Jordan, Utah 84088

Project For
The Jordan School District Board of Education

West Jordan High School Counseling & Day Care Remodel

8136 South 2700 West
South Jordan, Utah 84088

Project Phase
Bid Documents
Revision Schedule

No.	Description	Date

NWL Project Number
136.013
Project Issue Date
February 14, 2019

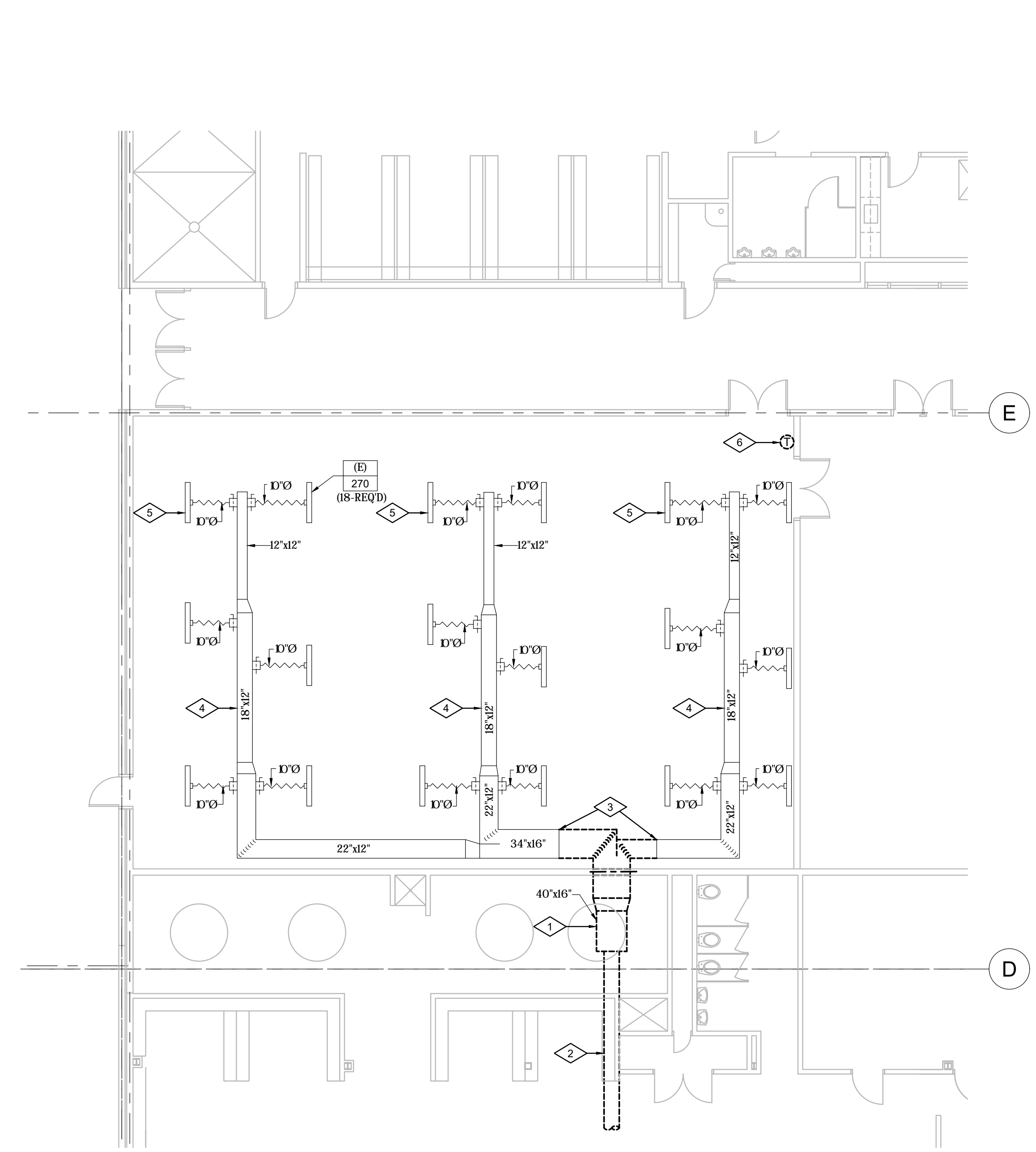
Sheet Title
Wrestling Room Mechanical Plans

Sheet Number

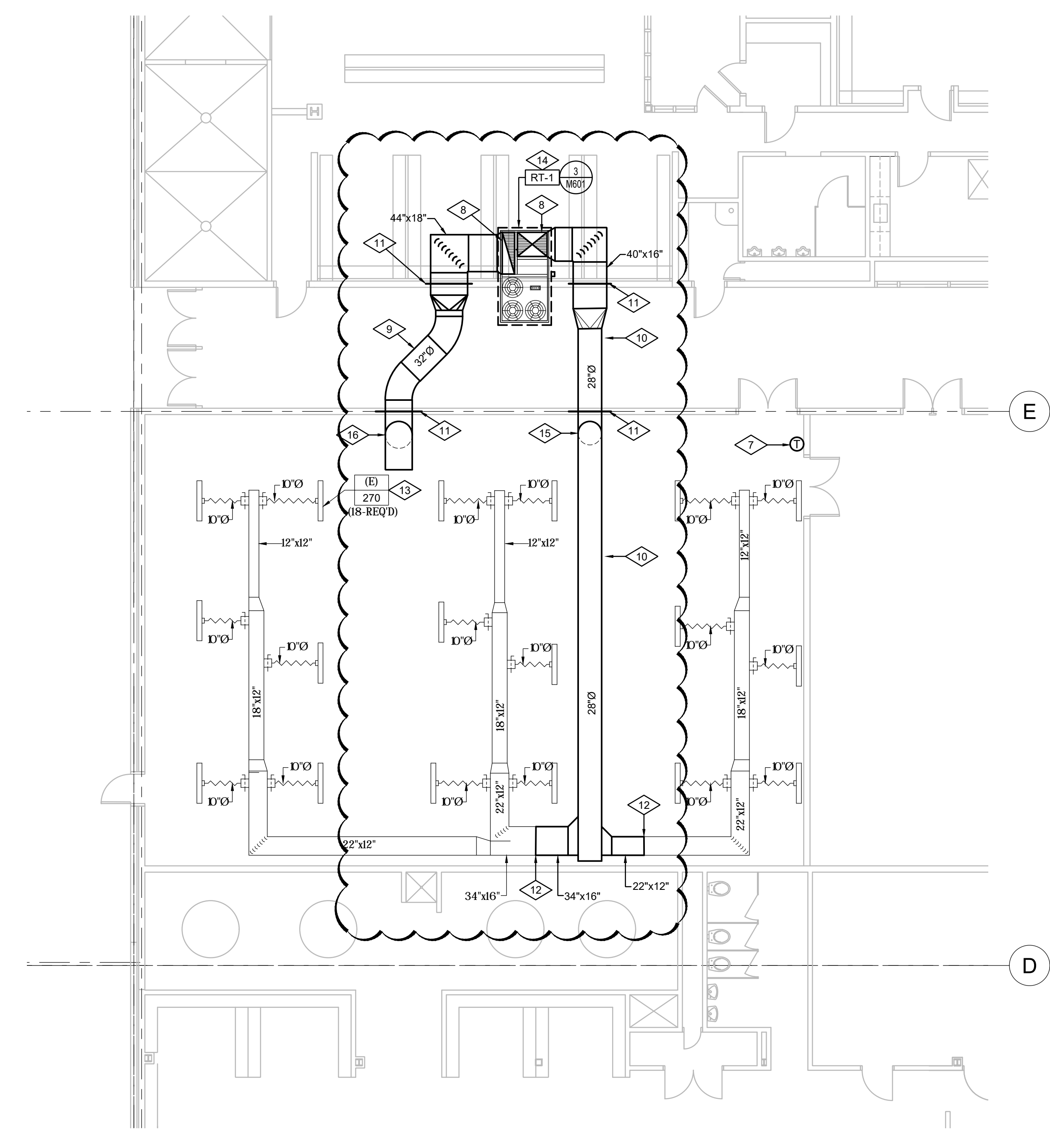
M103

REFERENCE NOTES

- 1 REMOVE EXISTING VAV BOX LOCATED IN MECHANICAL PENTHOUSE AND ALL ASSOCIATED ITEMS COMPLETE.
- 2 REMOVE EXISTING SUPPLY AIR DUCT BACK TO AIR HANDLING UNIT AND CAP.
- 3 REMOVE EXISTING SUPPLY AIR DUCTWORK TO THIS APPROXIMATE LOCATION. COORDINATE WITH NEW WORK PLAN ON THIS SHEET.
- 4 EXISTING SUPPLY AIR DUCTWORK TO REMAIN.
- 5 EXISTING LINEAR DIFFUSER AND ASSOCIATED FLEX DUCT TO REMAIN.
- 6 REMOVE EXISTING THERMOSTAT.
- 7 NEW HEATING AND COOLING THERMOSTAT.
- 8 SUPPLY AND RETURN AIR DUCT UP THRU ROOF TO RT-1. COORDINATE DUCT PENETRATIONS WITH EXISTING STRUCTURE.
- 9 RETURN AIR DUCT TO RUN ABOVE EXISTING CEILING. COORDINATE ROUTING WITH EXISTING CONDITIONS.
- 10 SUPPLY AIR DUCT TO RUN ABOVE EXISTING CEILING. COORDINATE ROUTING WITH EXISTING CONDITIONS.
- 11 CONTRACTOR TO CUT NEW OPENING FOR SUPPLY AND RETURN AIR DUCTS.
- 12 CONNECT TO EXISTING SUPPLY AIR DUCTWORK IN THIS APPROXIMATE LOCATION.
- 13 REBALANCE EXISTING SUPPLY AIR DIFFUSERS TO CFM INDICATED ON PLANS.
- 14 INSTALL NEW PACKAGED ROOF TOP ON EXISTING ROOF. CONTRACTOR TO COORDINATE LOCATION WITH EXISTING STRUCTURE.
- 15 SUPPLY AIR DUCT TO RISE UP AND RUN ABOVE EXISTING CEILING.
- 16 RETURN AIR DUCT TO RISE UP AND RUN ABOVE EXISTING CEILING.



WRESTLING ROOM MECHANICAL DEMOLITION PLAN
 (BID ALTERNATE #2)
 SCALE: 1/8" = 1'-0"



WRESTLING ROOM MECHANICAL NEW WORK PLAN
 (BID ALTERNATE #2)
 SCALE: 1/8" = 1'-0"

WEST JORDAN HIGH SCHOOL COUNSELING & DAYCARE REMODEL**Electrical Addendum #1****Issue Date: 03/04/2019****CLARIFICATION TO THE BIDDERS:****CHANGES TO THE SPECIFICATIONS:**

SECTION 26 0503

1. Refer to the Spare Parts. Remove requirement to provide spare fuses from Section 26 2815 and 26 2816. Remove requirement for spare diffusers from Section 26 5100. Decrease the number of spare type X1 fixtures to 5 and delete spare X2 from Section 26 5100. Provide 5 spare intercom speakers and reduce back boxes to 5 in Section 27 5123. Remove requirement for call switches from Section 27 5123.

CHANGES TO THE DRAWINGS:

SHEET E2.0

1. Remove all electrical devices from the ceiling in the existing area occupied where Reception B5, Conference B5L and Work B5M are shown. Remove light fixtures, smoke detectors, security devices, etc. Return all devices to the owner.
2. The light fixtures called out as A20 in Conference B5L are type H20.

SHEET E3.0

1. Verify exact location of the dishwasher and connect to circuit 5PD2-13.
2. Provide a duplex receptacle above the range for a recirculation fan and connect to circuit 5PD2-15.
3. Disconnect the existing dryer vent fan. Coordinate with mechanical drawings.
4. Remove all light fixtures in the affected area and store for re-installation. Thoroughly clean and reinstall existing type A75 light fixtures in Day Care D21, Preschool D18 Toilet D18A, Toilet D21C, Kitchen D19 and one type B light fixture shown.
5. Change fixture type D40 to type A40 in Storage D21D, Storage D18B, Utility D19A, Check-In D21B and Crib D21A.
6. Connect the three X1 exit lights to the existing emergency circuit in the area.

END OF ELECTRICAL ADDENDUM