

ELECTRICAL SYMBOL LEGEND

| SYMBOL | DESCRIPTION |
|----------|------------------------------------------------------------------------------------------------------------------------------------------------------|
| [Symbol] | FLUORESCENT LIGHTING FIXTURE |
| [Symbol] | FLUORESCENT LIGHTING FIXTURE |
| [Symbol] | INCANDESCENT AND HID LIGHTING FIXTURES, CLG. & WALL MTD. |
| [Symbol] | FLOOD LIGHTING UNIT. |
| [Symbol] | EXIT/EMERGENCY COMBO SIGN, DIRECTIONAL ARROWS INDICATED. |
| [Symbol] | EXIT SIGN, DIRECTIONAL ARROWS INDICATED. |
| [Symbol] | STRIP FLUORESCENT LIGHTING UNIT, SURFACE OR SUSPENDED. |
| [Symbol] | JUNCTION BOX - WALL/CEILING MOUNTED. |
| [Symbol] | DUPLEX RECEPTACLE, MOUNTED 24" UP UNLESS NOTED OTHERWISE. |
| [Symbol] | QUAD RECEPTACLE. TWO DUPLEX RECEPTACLES GANG MOUNTED. |
| [Symbol] | ISOLATED GROUND DUPLEX RECEPTACLE. |
| [Symbol] | GROUND FAULT INTERRUPTING RECEPTACLE. |
| [Symbol] | WEATHER PROOF GROUND FAULT INTERRUPTING RECEPTACLE. |
| [Symbol] | CEILING MOUNTED DUPLEX RECEPTACLE |
| [Symbol] | CEILING MOUNTED QUAD RECEPTACLE. TWO DUPLEX GANG MOUNTED |
| [Symbol] | SPECIAL PURPOSE RECEPTACLE. |
| [Symbol] | SINGLE POLE SWITCH MOUNTED 48" UP UNLESS NOTED OTHERWISE. |
| [Symbol] | TWO POLE, THREE WAY, FOUR WAY SWITCHES MTD. 48" UP. |
| [Symbol] | KEY OPERATED SWITCH, PILOT LIGHT SWITCH, MTD. 48" UP. |
| [Symbol] | SINGLE POLE SWITCHES GANG MOUNTED. |
| [Symbol] | SINGLE POLE WALL MOUNTED OCCUPANCY/VACANCY SENSOR SWITCH. |
| [Symbol] | TELEPHONE OUTLET MTD. 24" UP. |
| [Symbol] | DATA OUTLET FOR P.O.S. SYSTEM. EMPTY 4x4 BOX W/ 1-1/2" PVC CONDUIT TO ABOVE CEILING, WIRING BY OTHERS. SUPPLY S.S. COVER PLATE W/2" DIA. GROMIT HOLE |
| [Symbol] | TIME CLOCK, PHOTOCELL. |
| [Symbol] | MANUAL MOTOR STARTER-DISCONNECT SWITCH. |
| [Symbol] | MOTOR DISCONNECT OR FUSED SAFETY SWITCH. |
| [Symbol] | MOTOR. |
| [Symbol] | ELECTRICAL PANELBOARDS, SURFACE OR FLUSH MOUNTED. |
| [Symbol] | 120 OR 277V CIRCUIT HOME RUN TO PANEL, LINE, NEUT., GND. |
| [Symbol] | 480, 240, 208V CKT HOME RUN TO PANEL, WIRE SIZE NOTED. |
| [Symbol] | CONDUIT CONCEALED IN WALLS OR ABOVE CEILING. |
| [Symbol] | CONDUIT CONCEALED IN OR UNDER FLOOR. |
| [Symbol] | WP DENOTES "WEATHER PROOF". |
| [Symbol] | EM DENOTES LIGHTING FIXTURE ON EMERGENCY POWER CIRCUIT. |
| [Symbol] | KEYNOTE. REFER TO NOTATION ON PLANS. |
| [Symbol] | ELEC EQUIP CONNECTION TAG - SEE EQUIP SCHEDULE |
| [Symbol] | FIRE ALARM MANUAL PULL STATION. |
| [Symbol] | SMOKE DETECTOR. |

NOTE: ALL SYMBOLS MAY NOT APPEAR ON THE DRAWINGS.

KEYNOTES

- PROVIDE POWER AND DATA CONNECTION FOR MENU BOARDS. COORDINATE EXACT REQUIREMENTS MENU BOARD VENDOR AND OWNER PRIOR TO ROUGH-IN.
- CONDENSER FOR COOLER/FREEZER LOCATED ON ROOF. SEE MEP1.01 AND EQUIPMENT SCHEDULE FOR ADDITIONAL INFORMATION.
- PROVIDE SHOW WINDOW RECEPTACLES WITHIN 18" OF THE TOP OF THE WINDOW PER NEC 210.62.
- G.C. TO VERIFY W/OWNER'S REPRESENTATIVE IF ALTERNATE EQUIPMENT IS BEING PROVIDED. IF NOT VERIFY W/OWNER'S REPRESENTATIVE WHETHER OUTLETS SHOWN TO BE PROVIDED FOR FUTURE USE OR OMITTED AS COST SAVINGS. G.C. TO COORDINATE W/OWNER'S REPRESENTATIVE AND EQUIPMENT VENDOR PRIOR TO INSTALLATION.
- PROVIDE 4-CHANNEL DIGITAL ASTRONOMIC TIME CLOCK AND 4-POLE CONTACTOR FOR CONTROL OF SIGNS, LIGHTING, AND KITCHEN EXHAUST FAN.
- PROVIDE JUNCTION BOX ABOVE COOLER/FREEZER FOR COOLER/FREEZER LIGHTS AND DOOR HEATER CONNECTION. CONTRACTOR MUST FIELD VERIFY POINT OF CONNECTION ON FREEZER/COOLER UNIT IN FIELD.
- PROVIDE 3/4" CONDUIT UNDERGROUND WITH CIRCUITS AS SHOWN FOR ORDER PEDESTAL, MENU BOARD, & MENU LIGHTING. SEE ARCHITECTURAL AND CIVIL DRAWINGS FOR EXACT LOCATION.
- EXISTING SIGN TO BE REFURBISHED. SEE ARCHITECTURAL DRAWINGS FOR EXACT LOCATION. INTERCEPT AND EXTEND EXISTING CONDUIT AND WIRE TO NEW PANEL WITH CIRCUIT AS SHOWN.
- PROVIDE WP, NEMA 3R, JUNCTION BOX WITH WEATHERPROOF DISCONNECT SWITCH PER NEC 600 IN AN ACCESSIBLE LOCATION. E.C. TO PROVIDE CONDUIT, WIRING, AND FINAL ELECTRICAL CONNECTION AS SHOWN
- PROVIDE 240V, 30A/2P NEMA 3R NON-FUSED DISCONNECT IN FREEZER FOR EVAPORATOR FAN CONNECTION.
- 120V, 1P, 20 AMP WP GFI RECEPTACLE WITH WEATHER PROOF COVER FOR CONDENSATE HEAT TAPE. COORDINATE LOCATION PRIOR TO ROUGH-IN.
- PROVIDE 240V, 30A/2P NEMA 3R NON-FUSED DISCONNECT IN COOLER FOR EVAPORATOR FAN CONNECTION.
- PROVIDE SEAL-OFF FITTINGS AND FOAM SEALANT AT ALL ELECTRICAL PENETRATIONS INTO FREEZER & COOLER BOX.
- LOCATE DEFROST TIMER ADJACENT TO WALK-IN FREEZER. PROVIDE INTERCONNECTION WIRING BETWEEN ROOF MOUNTED CONDENSER AND EVAPORATOR AS REQUIRED. COORDINATE WITH EQUIPMENT SUPPLIER.
- TELEPHONE INTERFACE BOX. MOUNT ON WALL BELOW CEILING ABOVE PANELS.
- ELECTRICAL SERVICE ENTRANCE AND METERING EQUIPMENT. SEE ELECTRICAL SERVICE RISER FOR ADDITIONAL INFORMATION.

GENERAL NOTES

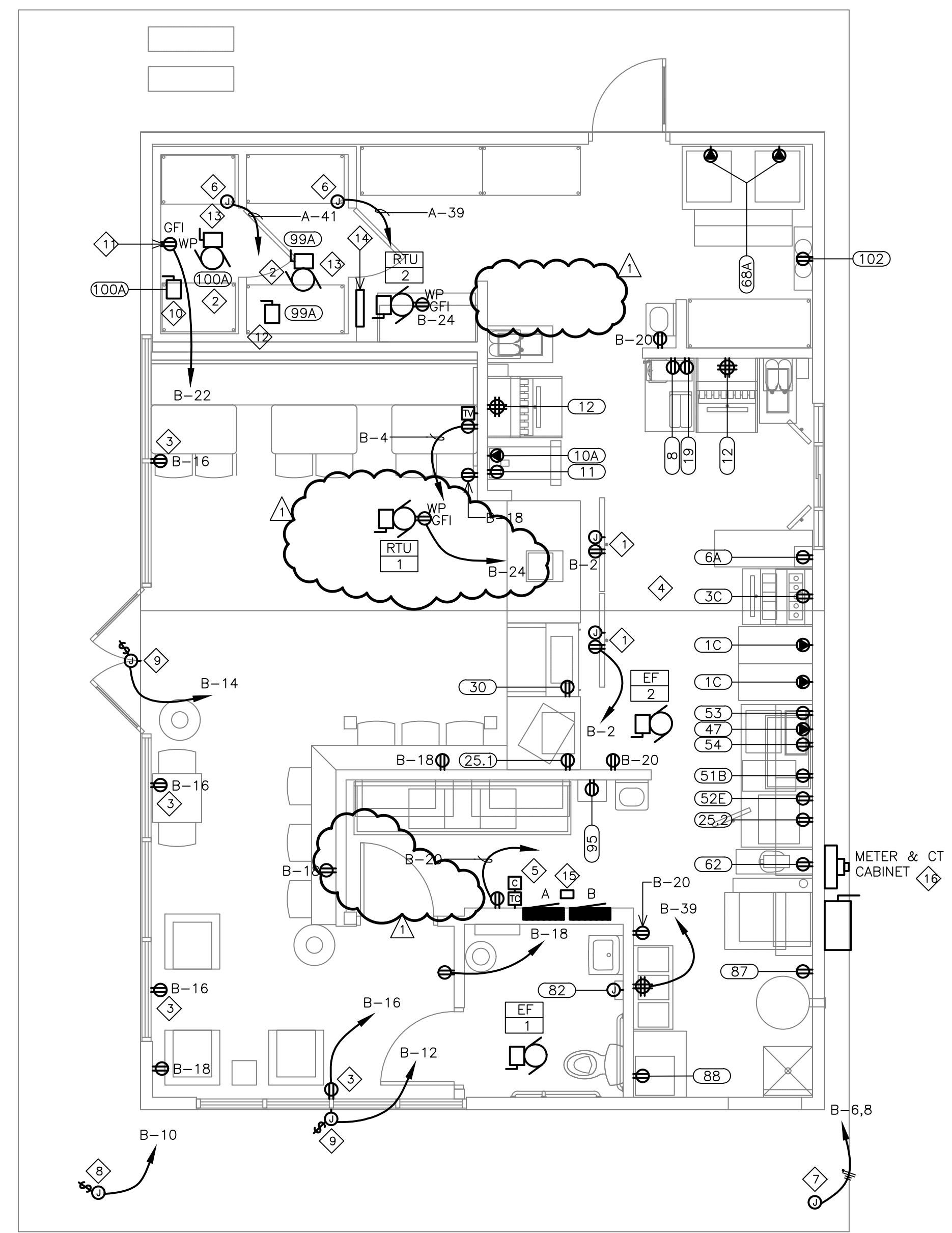
- ALL RECEPTACLES MOUNTED AT 24" A.F.F. UNLESS NOTED OTHERWISE.
- ALL 120V, 15 & 20 AMP RECEPTACLES LOCATED IN KITCHEN, REGARDLESS OF INTENDED USE SHALL BE PROVIDED WITH CLASS 'A' GFI PROTECTION AT THE BREAKER.
- SEE K-SHEETS FOR EQUIPMENT PLAN & EQUIPMENT SCHEDULE.
- REFER TO DIVISION 16 ELECTRICAL SPECIFICATIONS (SHEET SP6.0) FOR ADDITIONAL INFORMATION.
- OWNER TO WALK THROUGH WITH GENERAL CONTRACTOR / ELECTRICAL ENGINEER FOR APPROVAL OF OUTLET PLACEMENT.
- ROUGH-INS AND FINAL CONNECTIONS FOR ALL OWNER FURNISHED EQUIP. BY E.C. UNLESS NOTED OTHERWISE
- ALL EMPTY CONDUIT SHALL HAVE A PULL WIRE.
- E.C. SHALL COORDINATE DEVICE MOUNTING HEIGHTS, RECEPTACLE NEMA CONFIGURATIONS AND EXACT ELECTRICAL REQUIREMENTS WITH THE KITCHEN EQUIPMENT SUPPLIER, EQUIPMENT SPECIFICATION SHEETS AND K-SHEETS.
- E.C. SHALL PROVIDE AND INSTALL CORD AND PLUG KITS FOR ANY KITCHEN EQUIPMENT AS NEEDED.
- ALL BRANCH CIRCUITS UP TO 100'-0" SHALL UTILIZE #12 CONDUCTORS MINIMUM. ALL BRANCH CIRCUITS FROM 101'-0" TO 150'-0" IN LENGTH SHALL UTILIZE #10 CONDUCTORS MINIMUM. ALL BRANCH CIRCUITS 151'-0" UP TO 250'-0" IN LENGTH SHALL UTILIZE #8 CONDUCTORS MINIMUM. CIRCUITS ABOVE 251'-0" SHALL UTILIZE #6 CONDUCTORS MINIMUM.

EQUIPMENT SCHEDULE - BUILDING 15

| ITEM NO | QTY | DESCRIPTION | AMPS | VOLTS | PHASE | DISCONNECT | NEMA | HEIGHT (AFF) | PANEL-CIRCUIT | CONDUIT-WIRE-BRKR | GROUND WIRE | EQUIPMENT NOTES |
|---------|-----|---------------------------------------|------|---------|-------|-------------|----------|--------------|------------------|---------------------|-------------|------------------------------------|
| 1C | 2 | ICE CREAM MACHINE (ELECTRO FREEZE) | 24.5 | 120/240 | 1 | C&P | VERIFY | 72" | A-1,3, A-5,7 | 1/2"C.-3 #10-30A/2P | 1 #10 | |
| 3A | 1 | REFRIGERATED FOUNTAINETTE | 3.4 | 120 | 1 | C&P | 5-20R | VERIFY | B-3 | 1/2"C.-2 #12-20A/1P | 1 #12 | |
| 6A | 1 | TABLE TOP MIXER | 5.2 | 120 | 1 | C&P | 5-20R | VERIFY | B-3 | 1/2"C.-2 #12-20A/1P | 1 #12 | |
| 8 | 1 | COFFEE MACHINE | 14.0 | 120 | 1 | C&P | 5-20R | VERIFY | B-5 | 1/2"C.-2 #12-20A/1P | 1 #12 | |
| 10A | 1 | SLUSH MACHINE DRINK (ELECTRO FREEZE) | 25.5 | 240 | 1 | C&P | VERIFY | | A-9,11 | 3/4"C.-2 #8-35A/2P | 1 #10 | |
| 11 | 1 | SLUSH FILL STATION | 1.0 | 120 | 1 | C&P | 5-20R | VERIFY | B-1 | 1/2"C.-2 #12-20A/1P | 1 #12 | |
| 12 | 1 | ULTIMATE DRINK MACHINE W/ICE BIN | 13.3 | 120 | 1 | C&P | (2)5-20R | VERIFY | B-9, B-11 | 1/2"C.-2 #12-20A/1P | 1 #12 | |
| 19 | 1 | LEMONADE DISPENSER | 3.6 | 120 | 1 | C&P | 5-20R | VERIFY | B-2 | 1/2"C.-2 #12-20A/1P | 1 #12 | |
| 25.1 | 1 | PRETZEL DISPLAY CASE | 5.3 | 120 | 1 | C&P | 5-20R | VERIFY | B-13 | 1/2"C.-2 #12-20A/1P | 1 #12 | |
| 25.2 | 1 | PRETZEL OVEN | 14.2 | 120 | 1 | C&P | 5-20R | VERIFY | B-17 | 1/2"C.-2 #12-20A/1P | 1 #12 | |
| 30 | 1 | REFRIGERATED DISPLAY CASE | 12.0 | 120 | 1 | C&P | 5-20R | VERIFY | B-15 | 1/2"C.-2 #12-20A/1P | 1 #12 | |
| 47 | 1 | STEAMER | 15.9 | 240 | 1 | C&P | 6-20R | VERIFY | B-29,31 | 1/2"C.-2 #12-20A/2P | 1 #12 | |
| 51B | 1 | WARMERS | 12.5 | 120 | 1 | C&P | 5-20R | VERIFY | B-19 | 1/2"C.-2 #12-20A/1P | 1 #12 | |
| 52E | 1 | HOT / COLD COMBO CONEY TABLE | 15.0 | 120 | 1 | C&P | 5-20R | VERIFY | B-21 | 1/2"C.-2 #12-20A/1P | 1 #12 | |
| 53 | 1 | HOT DOG WARMER | 11.7 | 120 | 1 | C&P | 5-20R | VERIFY | B-23 | 1/2"C.-2 #12-20A/1P | 1 #12 | |
| 54 | 1 | HOT DOG CAROUSEL | 14.6 | 120 | 1 | C&P | 5-20R | VERIFY | B-25 | 1/2"C.-2 #12-20A/1P | 1 #12 | |
| 62 | 1 | COUNTER TOP MIXER | 10.0 | 120 | 1 | C&P | 5-20R | VERIFY | B-27 | 1/2"C.-2 #12-20A/1P | 1 #12 | |
| 68A | 2 | ICE MACHINE (SCOTSMAN) | 13.0 | 240 | 1 | C&P | VERIFY | 84" | A-17,19, A-21,23 | 1/2"C.-2 #12-15A/2P | 1 #12 | |
| 82 | 1 | HAND DRYER | 6.0 | 120 | 1 | DIRECT | -- | VERIFY | B-41 | 1/2"C.-2 #12-20A/1P | 1 #12 | PROVIDE LOCK OFF DEVICE AT BREAKER |
| 87 | 1 | DRINK CARBONATOR | 12.0 | 120 | 1 | C&P | 5-20R | 60" | B-33 | 1/2"C.-2 #12-20A/1P | 1 #12 | |
| 88 | 1 | SLUSH PRECHILLER | 7.8 | 120 | 1 | C&P | 5-20R | VERIFY | B-35 | 1/2"C.-2 #12-20A/1P | 1 #12 | |
| 95 | 1 | WATER HEATER (Gas) | 2.0 | 120 | 1 | 30A/1P NFS | -- | VERIFY | B-37 | 1/2"C.-2 #12-20A/1P | 1 #12 | |
| 99A | 1 | COOLER COIL/FAN AND REMOTE CONDENSOR | 10.9 | 240 | 1 | 30A/2P NFS | -- | -- | A-25,27 | 1/2"C.-2 #12-20A/2P | 1 #12 | |
| | 1 | EVAPORATOR | 2.7 | 120 | 1 | 30A/1P NFS | -- | -- | A-29 | 1/2"C.-2 #12-20A/1P | 1 #12 | |
| 100A | 1 | FREEZER COIL/FAN AND REMOTE CONDENSOR | 10.9 | 240 | 1 | 30A/2P NFS | -- | -- | A-31,33 | 1/2"C.-2 #12-20A/2P | 1 #12 | |
| | 1 | EVAPORATOR | 8.7 | 240 | 1 | 30A/2P NFS | -- | -- | A-35,37 | 1/2"C.-2 #12-20A/2P | 1 #12 | |
| 102 | 1 | WATER FILTRATION SYSTEM | 6.4 | 120 | 1 | C&P | 5-20R | 84" | B-27 | 1/2"C.-2 #12-20A/1P | 1 #12 | |
| RTU-1 | 1 | ROOF TOP UNIT | 48.0 | 240 | 1 | 100A/2P NFS | -- | -- | A-2,4 | 1"C.-2#4-70A/2P | 1#8 | |
| RTU-2 | 1 | ROOF TOP UNIT | 48.0 | 240 | 1 | 100A/2P NFS | -- | -- | A-6,8 | 1"C.-2#4-70A/2P | 1#8 | |
| EF-1 | 1 | KITCHEN EXHAUST FAN | 4.4 | 120 | 1 | -- | -- | -- | A-16 | 1/2"C.-2 #12-20A/1P | 1#12 | CONTROL VIA RESTROOM LIGHT SWITCH |
| EF-2 | 1 | KITCHEN EXHAUST FAN | 4.4 | 120 | 1 | -- | -- | -- | A-14 | 1/2"C.-2 #12-20A/1P | 1#12 | CONTROL VIA TIME CLOCK |

GENERAL NOTES

- DIVISION 16 CONTRACTOR TO PROVIDE RECEPTACLES AND DISCONNECT SWITCHES AS CALLED FOR IN THE SCHEDULE ABOVE UNLESS NOTED OTHERWISE.
- VERIFY ALL EQUIPMENT RATINGS AND REQUIREMENTS WITH APPROVED SHOP DRAWINGS/OWNER SUPPLIER PRIOR TO ROUGH IN.
- ALL EQUIPMENT AND MOTORS TO BE CONNECTED BY DIVISION 16 CONTRACTOR UNLESS STATED OTHERWISE.
- ALL 120 VOLT 15 AND 20 AMP OUTLETS IN KITCHEN/FOOD PREP AREAS TO BE GFI PROTECTED PER THE NEC, PROVIDE ACCORDINGLY.



1 POWER PLAN
E2.02 SCALE: 1/4"=1'-0"

CONSULTANT:
DUNHAM
50 South Sixth Street / Suite 1100
Minneapolis, Minnesota 55402-1540
PHONE 612.465.7550
FAX 612.465.7551
WEB dunhameng.com
mechanical + electrical
consulting engineering

CLIENT:
NEIGHBORHOOD SDI
P.O. BOX 95388
SOUTH JORDAN, UT 84095

PROJECT INFORMATION:

SONIC
SONIC 3D CONCEPT
14 NORTH FORT LANE
LAYTON, UT 84041
STORE #6697



4/11/2018

PROJECT NO.: 0418739-017
DRAWN BY: CM
CHECKED BY: RM

ISSUE: DATE:
BIDDING SET 03-19-18
PERMIT SET 03-22-18

REVISION: DATE:
BIDDING CHANGES 04-11-18

PROJECT LOCATION:
LAYTON, UT
(3D CONCEPT)

SHEET NUMBER / TITLE:
E2.02
POWER PLAN